

A photograph of a luxury yacht deck during sunset. The deck is white with a wooden floor. On the left, there is a dining table with white plates and glasses. A large, dark, curved structure, possibly a part of the yacht's superstructure, is in the foreground. The sea is visible on the right, and the sky is a mix of blue and orange. The overall atmosphere is serene and elegant.

**GRANDEZZA**

DESIGNED FOR PRESTIGIOUS MOMENTS AT SEA



Designed and built in Kokkola, Finland, Grandezza motorboats are highly esteemed by yachtsmen and women all over Europe.

The unparalleled design combined with the finest quality in craft and precision in every detail make Grandezza the perfect companion for prestigious times at sea.



# FROM THE BEAUTIFUL SHORES OF FINLAND

Grandezza boats are built in the picturesque seaside town of Kokkola, on the western coast of Finland by the beautiful Gulf of Bothnia. We are proud to be a part of the strong boat building and seafaring heritage of our charming region. Today we have three active boat yards in the area where all our boats are designed and built.

The greater Kokkola region is considered as the birthplace of the Finnish boat building tradition. To this day, the majority of the country's boat building industry operates in the area. This age-old, skilled tradition is reflected in the ambition that our

boat builders have for their craft, resulting in the uncompromised quality and design of Grandezza.

The proximity of the untamed sea and the versatile conditions of the vast northern archipelago have set a high standard for the quality and comfort of Grandezza. The Nordic archipelago and seasonal weather changes work as an unforgiving testing and developing environment for our boats. Thanks to our challenging proving grounds, every Grandezza boat is designed and built to provide our customers with comfortable and prestigious moments at sea - regardless of the conditions.



# IT'S ALL ABOUT THE FEELING

We put a lot of time in thinking about how the owners experience the boat: how it handles in different conditions, how the family and guests can enjoy their time on board, how it feels to wake up in the cabin - and so much more. All these aspects truly define the prestigious moments at sea.

Our design philosophy draws from our vast experience as active seafarers and from continuously listening to our customers. It is the feedback, the stories, the experiences and the suggestions we get from our customers that help us drive our development to new heights. All this combined with our wealth of experience - complemented with the use of the

latest technologies and top-quality materials and components - ensures that we are able to build boats that do not compromise.

The demanding conditions of the Nordic archipelago put quality, practicality and safety into the heart of our every design decision. The exterior and interior layouts are designed for convenience and comfort to cater the needs of even the most demanding owners in all conditions. From how the hull cuts through the water all the way to the comforts of the boat's inviting saloon and ample cabin storage space, every single aspect is diligently designed to ensure perfect times at sea.



# FROM THE HEART TO THE HANDS

Our skilled boat builders and designers take great pride in their masterful craft. The meticulous design and handcrafted building process, combined with numerous inspection checkpoints throughout the entire process ensure that every Grandezza boat is crafted to the highest standards. In short: we are truly dedicated to delivering our customers nothing short of perfection.

Every boat is a unique being, a beautiful and complicated combination of carefully chosen parts, components and materials. Thus we demand the same uncompromised dedication towards quality from all our partners and suppliers. Every material and component used in our boats is of the highest quality. They are carefully chosen and thoroughly tested to

make sure we are able to provide our customers with the finest experiences in every sense, down to the tiniest detail.

To ensure complete satisfaction, comfort and safety for the new Grandezza owners, every boat undergoes a detailed testing program before leaving our shipyard where everything is fine-tuned to perfection. We don't take shortcuts – ever.

These are the values behind the renowned Grandezza Quality. They come from the heart of our designers and builders who are the ones that give life to these state-of-the-art boats with their skilled hands. The result is what you see on these pages.



# RANGE

Step aboard to enjoy the seas  
with Grandezza.

# 25<sub>S</sub>

## FEEL THE SEA

---

Sea, sun and fun - the Grandezza 25 S is the ultimate day cruiser for celebrating good times at sea. The stylish and inviting cockpit together with the sun lounge offers an enjoyable environment for socializing, topped with a premium sport boat experience.





### Enjoy the lifestyle

The spacious cockpit with its generously sized dinette and cozy sunbed offers excellent conditions for day cruising.





### Hide away

The open plan design makes the cabin roomy, light-filled and perfect for resting and relaxing.





**Modern and sporty**

The open top lets you truly feel the boat's exceptional acceleration, manoeuvrability and dynamic handling.





28<sub>OC</sub>

## SOCIAL IN EVERY WAY

---

The Grandezza 28 OC is the perfect choice when you value easy living on the waters. Step aboard and find a spacious and refined cockpit with generous open space for entertaining. The inviting and comfortable cabin makes overnight staying easy.







**Explore places**  
Beautifully designed inside  
and out, the 28 OC is the  
perfect companion for  
enjoyable moments.





**Designed for  
social living**

The spacious and sociable cockpit with a sizable dinette and a large sunbed are ideal for getting the most out of sunny days.







### **Peaceful moments**

The cabin is tailored for peaceful relaxation and feels extremely light and airy.





28 DC

## CRUISE WITH COMFORT

—

A modern sports cruiser like no other, the Grandezza 28 DC is all about precision in design and performance. The open top allows you to fully enjoy the sunshine and the boat's sporty feel, while the elegant cabin is located in the peace and quiet of the lower deck.





**Feel the open space**

The large cockpit is designed for memorable moments under the sun and the stars.





**Impressive for all senses**

Powerful performance and agile handling take your boating experience to a whole new level.



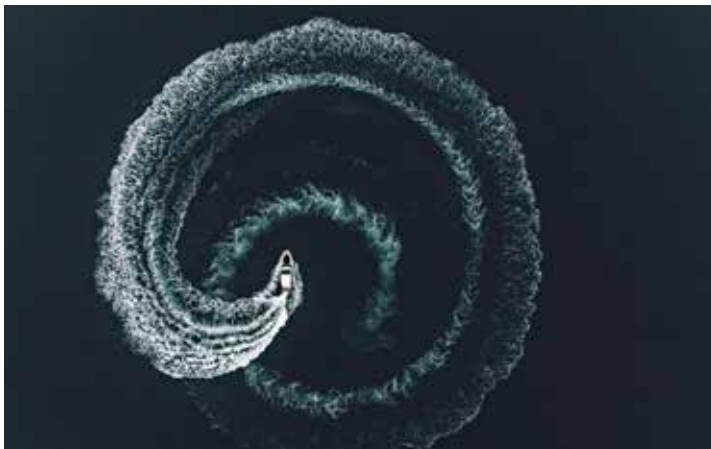
# 30 CA/OC

## DYNAMIC ELEGANCE

---

The impressive dynamic hull design guarantees excellent driving characteristics and the comfortable, functional interior represent Finnish boat building skills and excellent quality. The Grandezza 30 CA/OC makes each boat trip a first-class, elegant experience.





**Cruise with confidence**

The Grandezza 30 CA/OC is a perfect combination of aesthetics and modern functionality and offers an unforgettable sporty driving experience in its size category.







**Luxury boating  
at its best**

The combined saloon and cockpit invite you to fully enjoy the sun, relax by the wonderful views and dive into the cool water.





**Cozy cabins invite  
you to relax**

On the lower deck, there are two spacious cabins, and a separate bathroom. Large panorama windows bring natural light into the cabins creating a cozy atmosphere





# 30 OB

## ADVENTURE AWAITS

---

The new Grandezza 30 Outboard is a perfect partner for weekend trips and longer journeys. This sporty cabin cruiser offers top class facilities, and the high level of equipment fulfils the needs of the most demanding boaters. With Grandezza 30 OB you will relax safely and with style.







### Enjoy open air boating

The large lounge area creates a cosy atmosphere for an evening with guests. In warm weather you can try out the comfortable sun bed area on the foredeck.





### Pleasure in boating

The Grandezza 30 has been designed to optimise performance, handling and pleasure in boating. Large windows with great panoramic views bring in natural light into the cabin.





34<sub>OC</sub>

## ENJOY THE VOYAGE

—

The Grandezza 34 OC is a true masterpiece of impeccable design and performance. Whether on a longer voyage with the family in your favourite waters or while enjoying a tasty dinner under the stars with friends, everything has been designed to perfect your experience at sea.







**Social and practical**

The state-of-the-art galley and the generously sized dining area in the open cockpit are designed for delightful days with your friends and family.





**Explore the seas**  
The distinctive and stylish  
Grandezza 34 OC is  
crafted for unforgettable  
experiences in every way.





### Room for living and resting

The innovative layout makes the spacious  
and airy cabins on the lower deck peaceful  
for resting.





34<sub>OB</sub>

FOR MEMORABLE MOMENTS

---

The new Grandezza 34 Outboard is perfect for sun-drenched days and adrenaline-fuelled adventures. The powerful outboard engines offer thrill and speed during the day, while generous indoor and outdoor spaces provide the perfect place to relax as the sun goes down.







### **Taste of summer**

The large cockpit is ideal for entertaining and sunbathing. The u-shaped lounge provides comfortable seating for everyone on board, and the large sunbeds aft and bow suit for those hot lazy summer days.

The galley is well-equipped including a handy worktop extension and generous storage facilities.







**For extended cruises**

The bathroom and two spacious and inviting cabins with air conditioning and heating options await on the lower deck.

The panoramic hull windows with opening sections at both sides give incredible sea views.





### Thrill of speed

Fast, agile and easy to use, the Grandezza 34 OB, equipped with twin outboard engines, promises more than just impressive performance. Its hull design ensures efficient fuel consumption while offering an exciting boating experience.





37 CA

## ELEGANT COMPANION

—

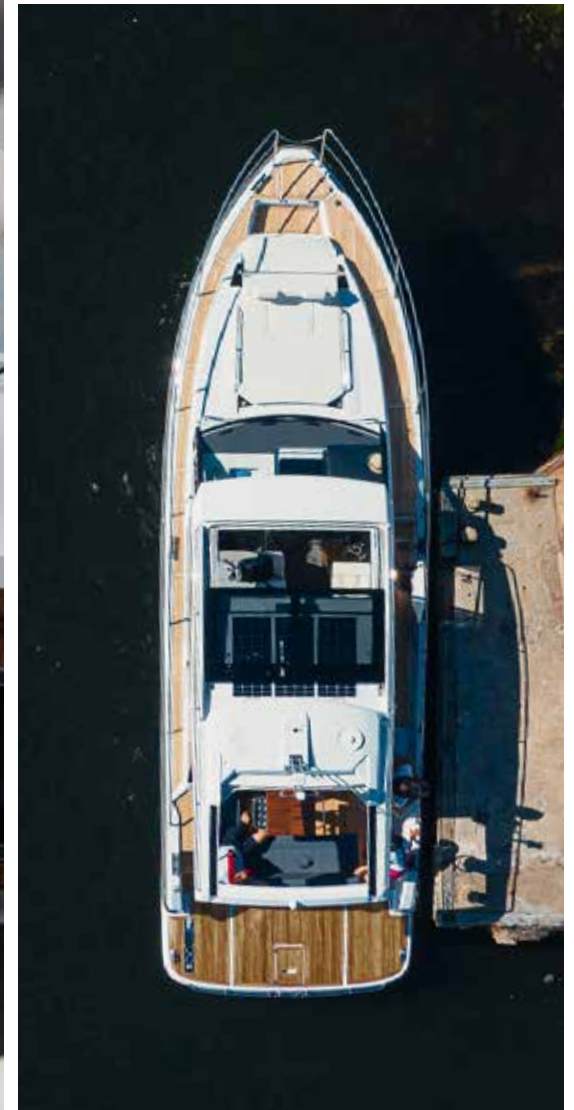
The Grandezza 37 CA is a true eye catcher with her elegant lines. The saloon and aft cockpit arrangement offer a generous entertaining area. The impressive design, extraordinary ease of handling and the inviting interior make every voyage both exciting and relaxing.





**Unbeatable handling and performance**

Enjoy the exciting freedom of open-air cruising. The dynamically designed hull rides smoothly through the waves.







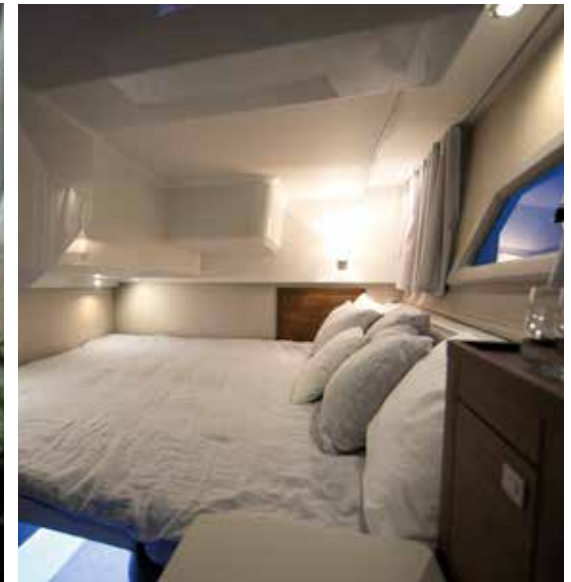
**GRANDEZZA**



### Open to the skies

The generous outdoor and indoor lounges with wetbar are perfect for entertaining. Enjoy the summer breeze by opening the powered sunroof and cockpit soft top.





**Beautiful accommodation**

The dynamic portlights bring in natural light to the inviting and peaceful master and quest cabin.





# 37 OB

## NEW STANDARD IN LUXURY BOATING

---

The Grandezza 37 Outboard is a masterpiece of modern design, offering unparalleled comfort, and sophistication. With its spacious interior spaces, high level of customization offerings, and powerful Mercury outboard engine options, the Grandezza 37 OB is poised to set a new standard in luxury boating.





### Open to the skies

The generous outdoor and indoor lounges with wetbar are perfect for entertaining. Enjoy the summer breeze by opening the sliding doors and powered sunroof and cockpit soft top.







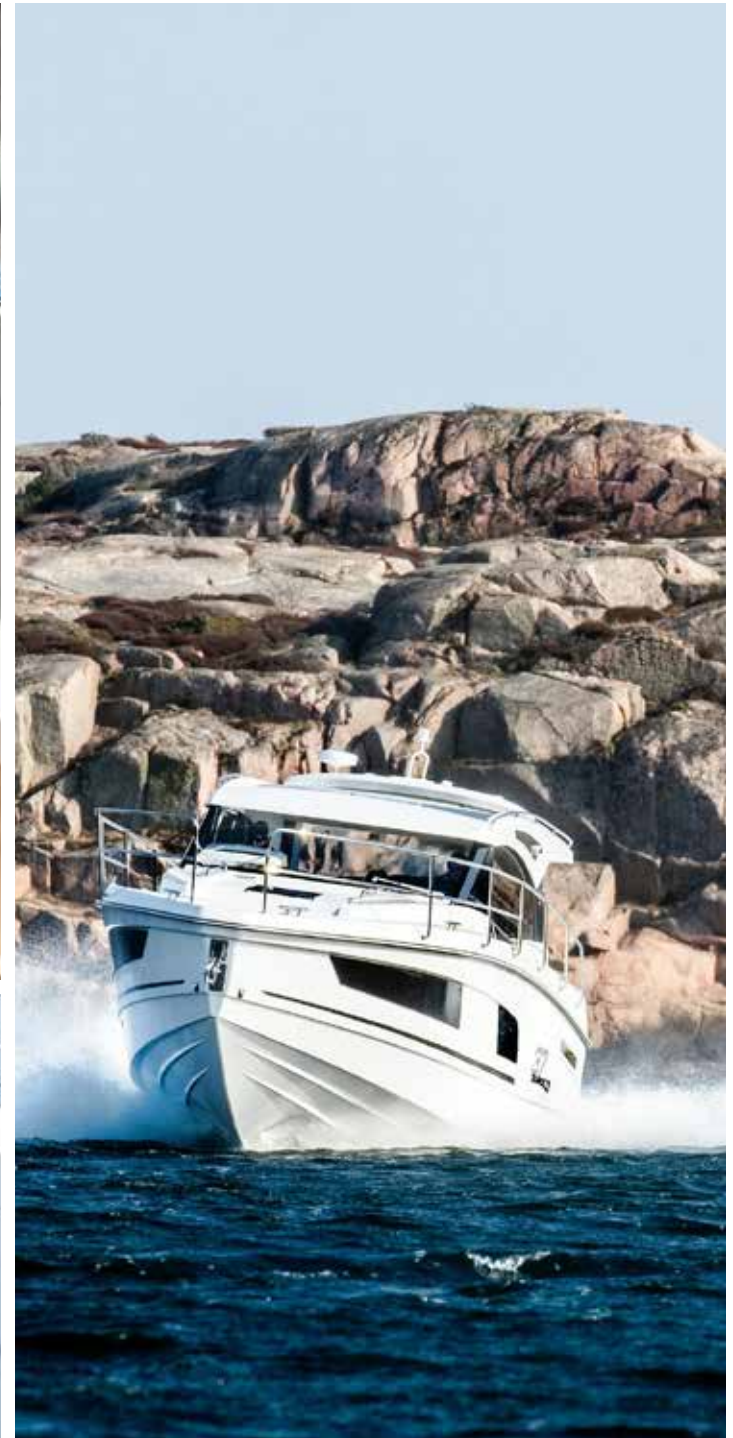
**Everything at its place**

The roomy interior and the practically designed layout make life at sea effortless and enjoyable.









**Impressive performance**

Feel the thrill of speed and total control – the dynamically designed hull cuts through the waves smoothly, ensuring an exceptional ride.





GRANDEZZA

### 30 CA/OC

9.40 m x 2.99 m 320-380 hp 10

PHASE 1/4: Cockpit and saloon

#### Cockpit and saloon

##### COCKPIT CUSHIONS



Silvertex Macadamia



Silvertex Ice



Silvertex Carbon

##### SALOON CUSHIONS



Silvertex Macadamia



Silvertex Ice

1 Cockpit and saloon

2 Forward cabin

3 Mid cabin

4 Foredeck

Link to your Grandezza boat:

[https://grandezza.fi/fleet/30-ca/?do\\_view1:](https://grandezza.fi/fleet/30-ca/?do_view1:) COPY

FIND YOUR NEAREST DEALER

SEND YOUR PLAN BY EMAIL

# INTERIOR & EXTERIOR OPTIONS

## CUSTOMIZE YOUR BOAT

---

We have developed a new visual selection tool that allows you to design your own Grandezza boat that fits your needs and style. You can choose from different colored cushions, wall panels, carpets, headboards and bed edges. In addition, you can choose optional curtains, bedspreads and wooden parts.

Proceed through the design tool space by space. Standard options are pre-selected, and you can customize them by making alternative choices or adding optional equipment. A link to your plan is saved so you can return to it later. You can also send your plan to chosen email.

Welcome to design!

Sundeck, cockpit, saloon, and cabin cushions



Silvertex Ice

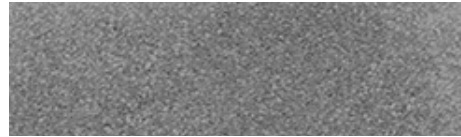


Silvertex Macadamia

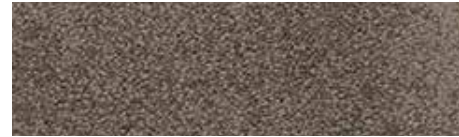


Silvertex Carbon

Cockpit & cabin carpets



Satine Grey 850



Satine Brown 280



Apriat-Vebe Prime Nop 20

Deck material



Teak



Flexiteek



Plasdeck

Wooden parts

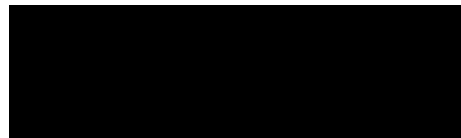


Waxed walnut

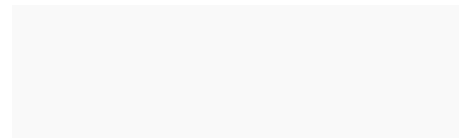


Ash

Calley covers



Black



White

**Wall panels**



Sandstone Marble



Sandstone Oyster



Sandstone Gravel

**Headboards**

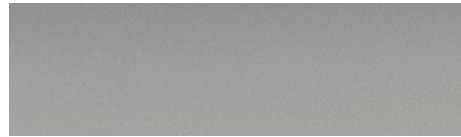


Vogue Cloud



Vogue Eucalyptus

**Bed edges**



Nautilus Glacier



Silvertex Macadamia



Nautilus Eclipse

**Curtains**

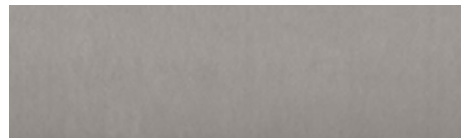


Natte Stone 5078



Natte Cadet Grey 5073

**Bed spreads**



Werlock Stone 16



SPECIFICATIONS  
& DECK PLANS

# 25 S

SPECIFICATIONS	25 S
LENGTH	7,53 M
BEAM	2,51 M
DRAFT (DRIVE RAISED)	0,50 M
DRAFT (DRIVE LOWERED)	1,00 M
WEIGHT	2200 KG
PERSONS	9
BERTHS	2
FUEL CONSUMPTION	1,4 L/N MILE
FUEL CAPACITY	214 L
WATER CAPACITY	39 L *
HOLDING CAPACITY	47 L *
CE CATEGORY	C
ENGINE OPTIONS	250 - 350 HP
MAXIMUM SPEED	44 KN **
CRUISING SPEED	20 - 30 KN

\* Optional equipment

\*\* With 6,2L 350 hp engine



**25 S**  
MAIN DECK



**25 S**  
LOWER DECK

# 28

OC

DC

SPECIFICATIONS	28 OC	28 DC
LENGTH	8,78 M	8,78 M
BEAM	2,85 M	2,85 M
DRAFT (DRIVE RAISED)	0,55 M	0,55 M
DRAFT (DRIVE LOWERED)	1,10 M	1,10 M
WEIGHT	3100 KG	3100 KG
PERSONS	8	8
BERTHS	4 + 2	4 + 2
FUEL CONSUMPTION	1,2 L/N MILE	1,2 L/N MILE
FUEL CAPACITY	265 L	265 L
WATER CAPACITY	80 L	80 L
HOLDING CAPACITY	50 L	50 L
CE CATEGORY	C	C
ENGINE OPTIONS	270 - 350 HP	270 - 350 HP
MAXIMUM SPEED	39 KN *	39 KN *
CRUISING SPEED	20 - 31 KN	20 - 31 KN

\* With D4 300 hp engine



**28 OC**  
ROOF



**28 OC / 28 DC**  
MAIN DECK



**28 OC / 28 DC**  
LOWER DECK

30

CA

OC

OB

SPECIFICATIONS	30 CA	30 OC	30 OB
LENGTH	9,45 M	9,45 M	9,35 M
BEAM	2,99 M	2,99 M	2,99 M
DRAFT (DRIVE RAISED)	0,70 M	0,70 M	0,56 M
DRAFT (DRIVE LOWERED)	1,20 M	1,20 M	-
WEIGHT	4238 KG	4138 KG	4505 KG
PERSONS	10	10	10
BERTHS	2 + 2	2 + 2	2 + 2
FUEL CONSUMPTION	1,8 L/N MILE	1,8 L/N MILE	2,4 L/N MILE
FUEL CAPACITY	420 L	420 L	760 L
WATER CAPACITY	150 L	150 L	150 L
HOLDING CAPACITY	140 L	140 L	140 L
CE CATEGORY	C	C	C
ENGINE OPTIONS	320 - 380 HP	320 - 380 HP	2 x 250 - 300 HP
MAXIMUM SPEED	36 KN *	36 KN *	46 KN **
CRUISING SPEED	20-31 KN	20-31 KN	23-35 KN

\* With D6 380 hp engine

\*\* With 2 x Yamaha F300NSBX  
Twin engines



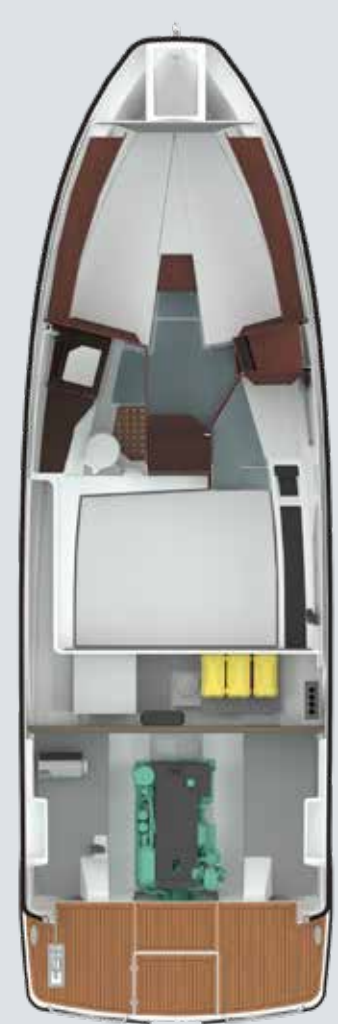
**30 CA/OC**  
ROOF



**30 CA/OC**  
MAIN DECK



**30 OB**  
MAIN DECK



**30 CA/OC/OB**  
LOWER DECK

# 34

OC

OB

SPECIFICATIONS	34 OC	34 OB
LENGTH	10,03 M	10,15 M
BEAM	3,23 M	3,23 M
DRAFT (DRIVES RAISED)	0,70 M	0,70 M
DRAFT (DRIVES LOWERED)	1,20 M	-
WEIGHT	4900 KG	5000 KG
PERSONS	8	8
BERTHS	4 + 2	4 + 2
FUEL CONSUMPTION	1,7 L/N MILE	3,2 L/N MILE
FUEL CAPACITY	490 L	490 L
WATER CAPACITY	120 L	120 L
HOLDING CAPACITY	102 L	102 L
CE CATEGORY	B	C
ENGINE OPTIONS	380 - 500 HP	2 x 300 HP
MAXIMUM SPEED	35 KN*	43 KN*
CRUISING SPEED	22 - 28 KN	27 - 32 KN

\* With D6 380 hp engine

\* With 2 x Mercury 300 hp engines



**34 OC**  
ROOF



**34 OC**  
MAIN DECK



**34 OB**  
MAIN DECK



**34 OC**  
LOWER DECK

37

CA

OB

SPECIFICATIONS	37 CA	37 OB
LENGTH	11,55 M	11,55 M
BEAM	3,50 M	3,50 M
DRAFT (DRIVES RAISED)	0,70 M	0,70 M
DRAFT (DRIVES LOWERED)	1,20 M	-
WEIGHT	7500 KG	7500 KG
PERSONS	10	10
BERTHS	2 + 2 + 2	2 + 2 + 2
FUEL CONSUMPTION	2,7 L/N MILE	3,9 L/N MILE
FUEL CAPACITY	650 L	650 L
WATER CAPACITY	260 L	260 L
HOLDING CAPACITY	160 L	160 L
CE CATEGORY	B	B
ENGINE OPTIONS	2 x 270 - 320 HP	2 x 350 - 400 HP
MAXIMUM SPEED	35 KN *	43 KN *
CRUISING SPEED	20 - 25 KN	25 - 28 KN

\* With 2 x D4 300 hp engines

\* With 2 x Mercury V10-400 hp engines



**37 CA**  
ROOF



**37 CA**  
MAIN DECK



**37 OB**  
MAIN DECK



**37 CA/OB**  
LOWER DECK





